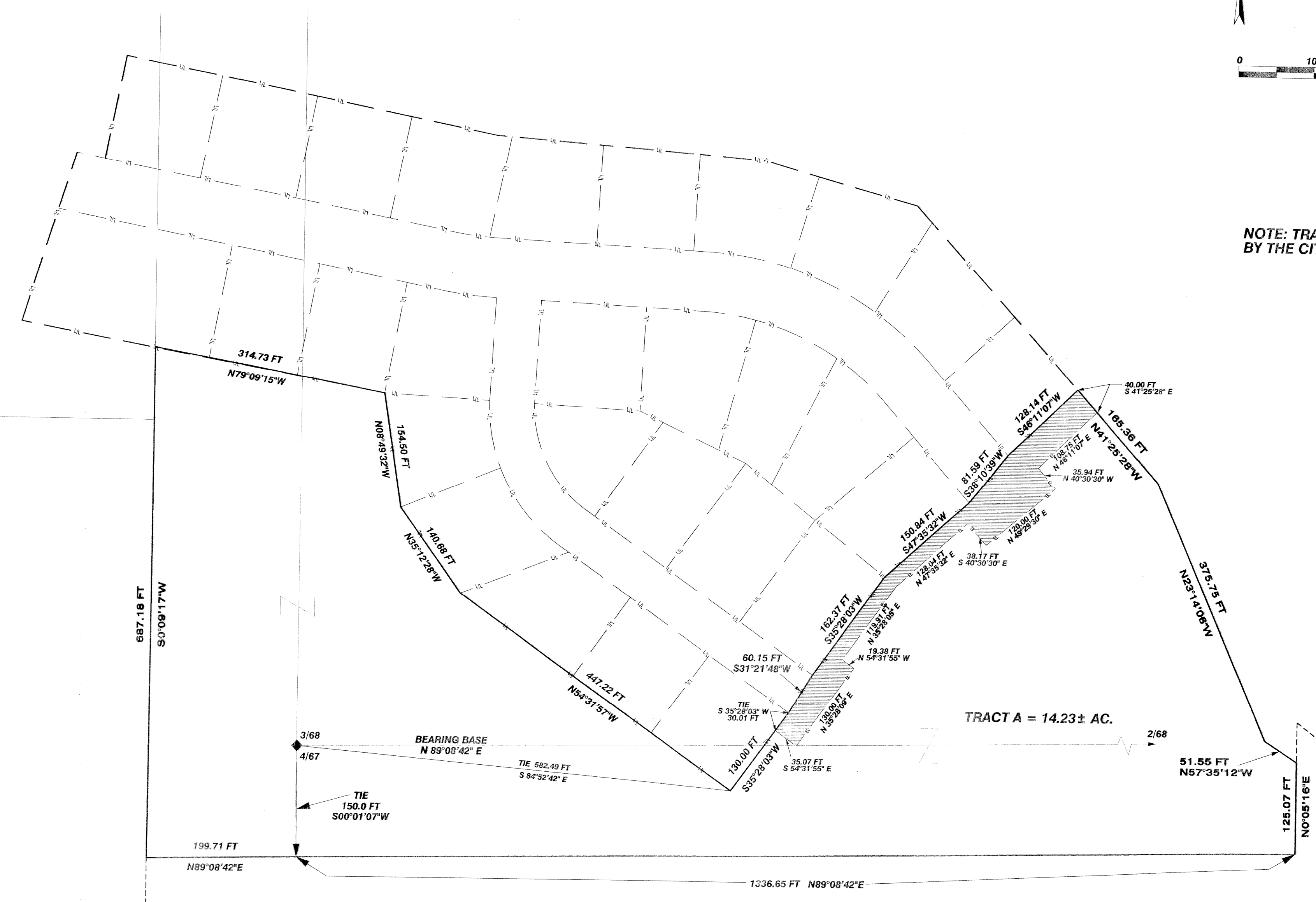


**LEGEND**

- CITY LIMITS
- SUBDIVISION BOUNDARY
- EXISTING LOT LINES
- PROPOSED LOT LINES
- TRACT A BOUNDARY
- TEMPORARY RIGHT-OF-WAY AND UTILITY EASEMENT
- FOUND STONE MONUMENT

0 100 200 300


NOTE: TRACT A EQUALS A PORTION OF LAND ANNEXED BY THE CITY OF CODY ON MARCH 21, 2006.



LOT 4 SECTION 2

TRACT A = 14.23± AC.

MAY 9, 2006

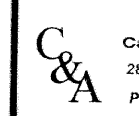


3324 8th HORN AVENUE  
CODY, WY 82414  
PHONE: (307) 527-9919 FAX: (307) 527-0616

FINAL PLAT  
PAGE 2 OF 2  
**PANORAMA VIEW  
ADDITION PHASE III**

DEVELOPER:  
MOUNTAIN HOLDING INC.

within Lot #2, Section #1, Lot #4, Section #2, Lot #67  
and Lot #68 Resurvey T.22N., R.102W. 6th P.M.  
City of Cody, Park County, Wyoming



Campbell & Associates  
2824 8th HORN AVENUE  
CODY, WY 82414  
PHONE: (307) 587-8901

WO 05-02